

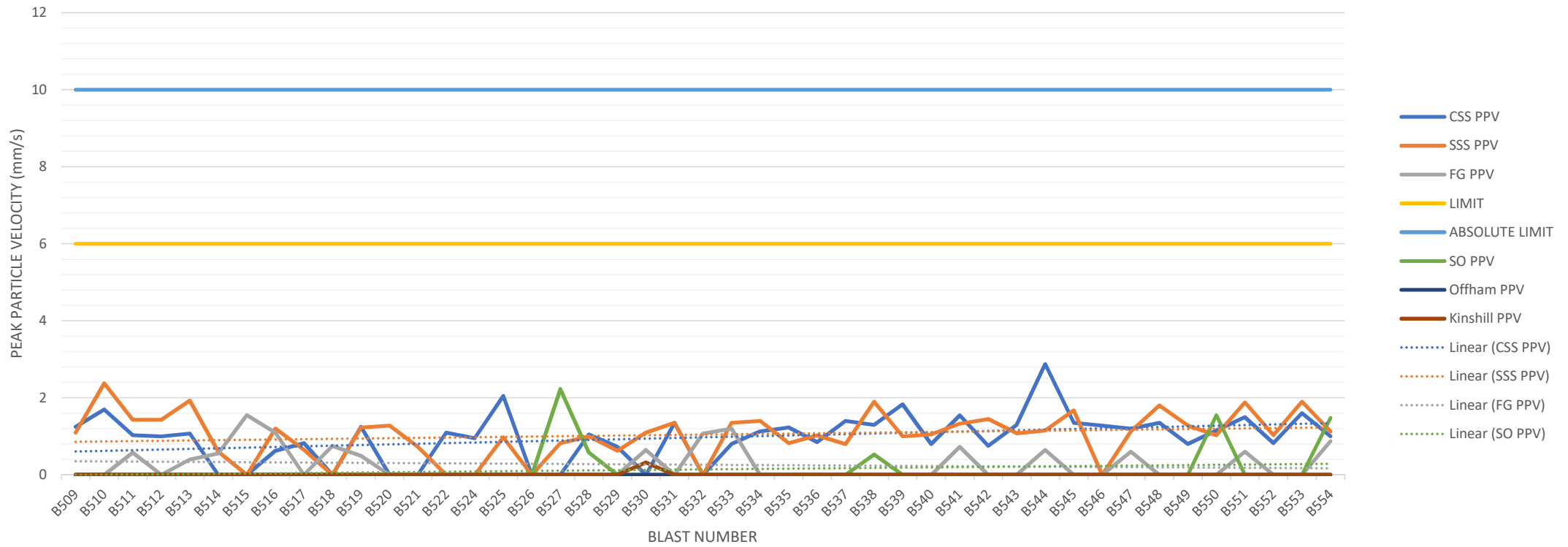
Appendix 8 to Item C2

Request for approval of details pursuant to conditions 4, 7, 8, 12, 17 and 27 of planning permission TM/88/1002 at Blaise Farm Quarry, Blaise Quarry Road, Kings Hill, West Malling, Kent ME19 4PN – TM/88/1002/RVARA (KCC/TM/0121/2020)

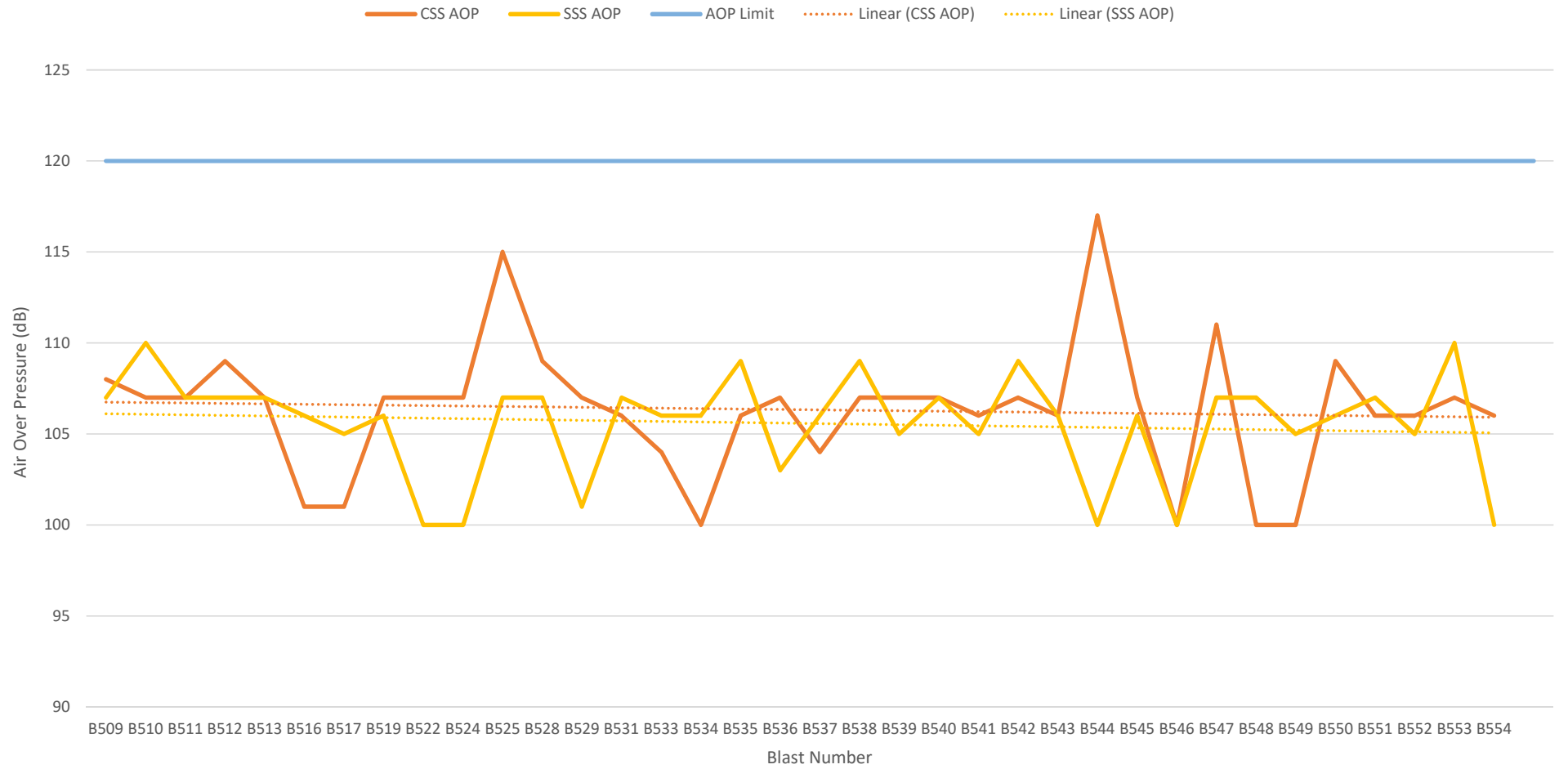
Appendix 8:

- **Appendix 8:** Blaise Farm Quarry GAL Blasting Data (1.3.20 to 11.8.20) and Blast Monitoring Results 11.8.20

BLAISE FARM QUARRY PPV READINGS AT MONITORED STATIONS 1st March 2020- 11th August 2020



Blaise Farm Quarry Air Over Pressure 1st March 2020 – 11th August 2020





COMPANY: KCC

DATE: 15/08/2020

ATTENTION: Jim Wooldridge

SUBJECT: Blast vibration monitoring Blaise Farm

FROM: William Hoare

MESSAGE

Hello Jim

Vibrograph readings for blast number B554 fired 11/08/20 at 1310 hours. The stations monitored were Site Office, Central Site Station, Southern Site Station and Farm gate 2.

The Monitor's that gave a reading today was Central, Farm Gate and Site Station Southern Site Station.

Total explosive weight	1000 Kg
Max. instantaneous charge weight	10kg
Weather conditions	Clear, Sunny, Hot
Next blast day	To be confirmed

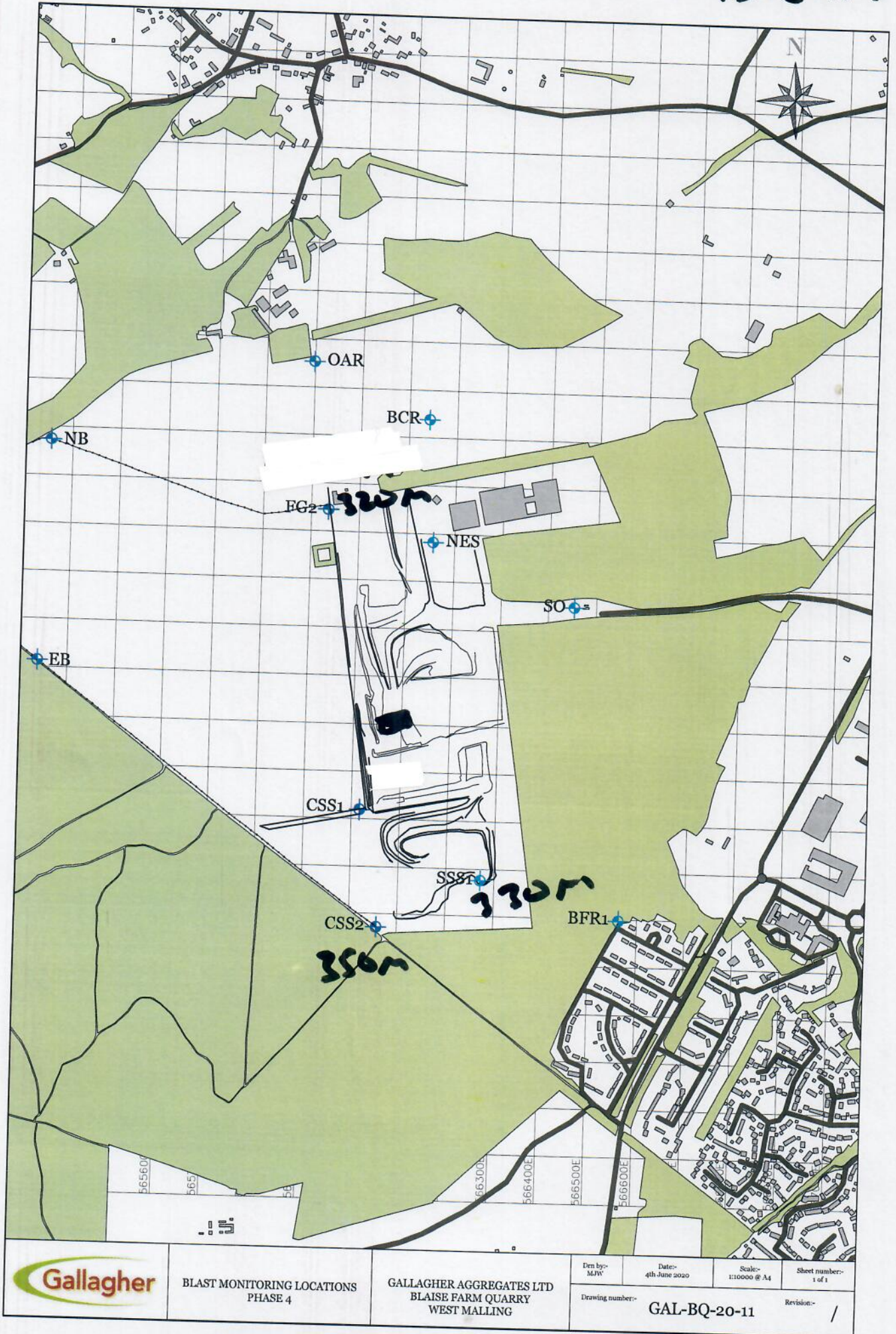
Regards,

William Hoare

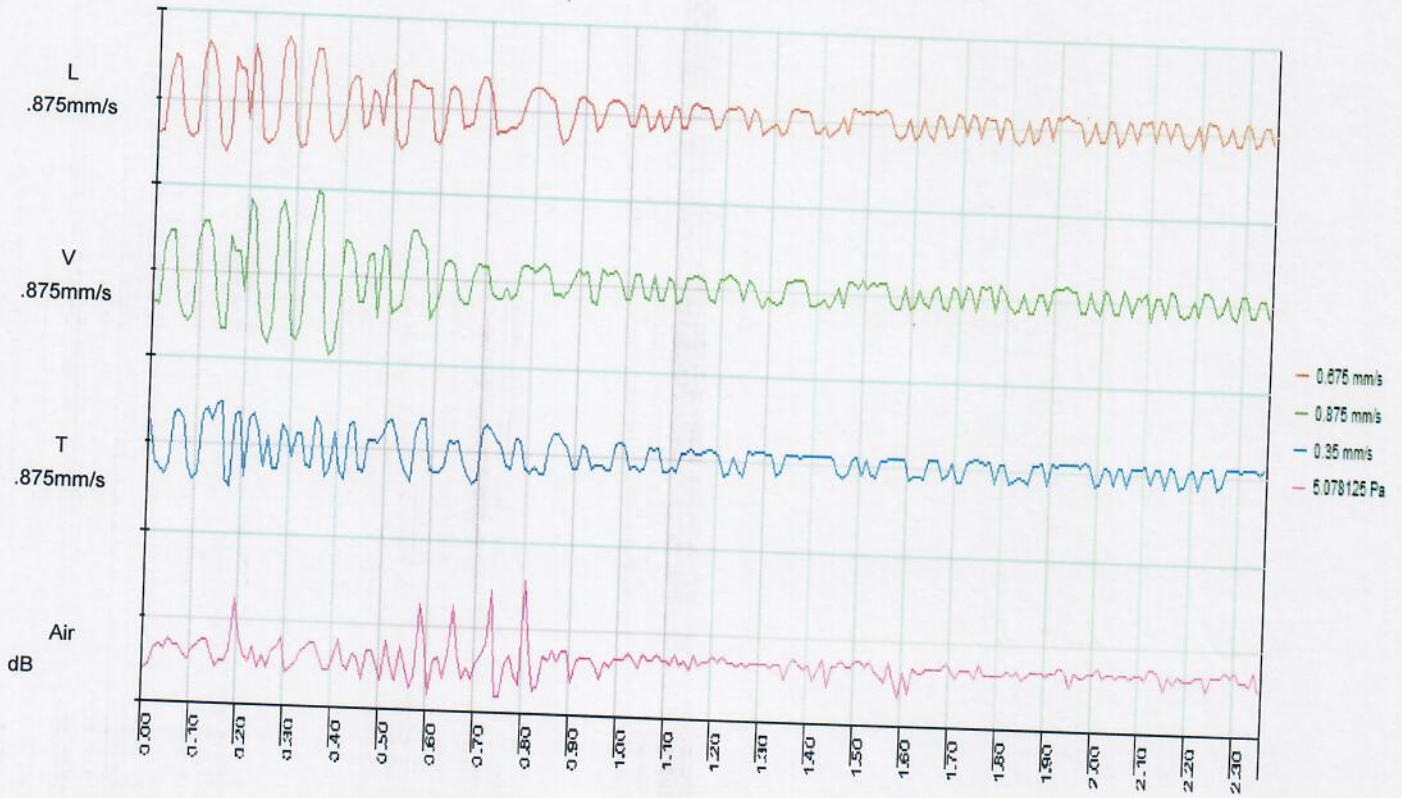
B554

11-8-20

1312hrs

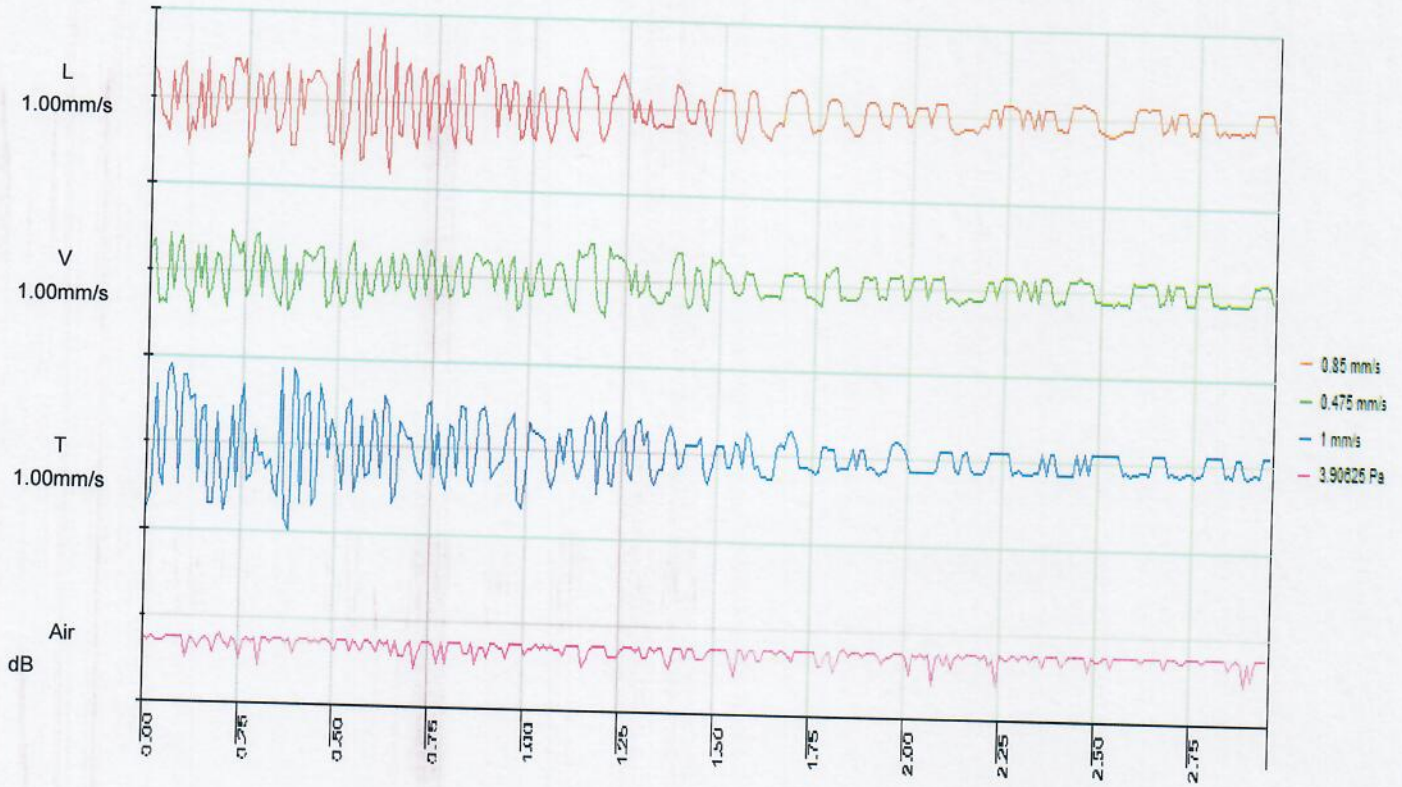


Event 721 11/08/20 13:12:44 Calibrate by: MAY 21 Farm Gate B654



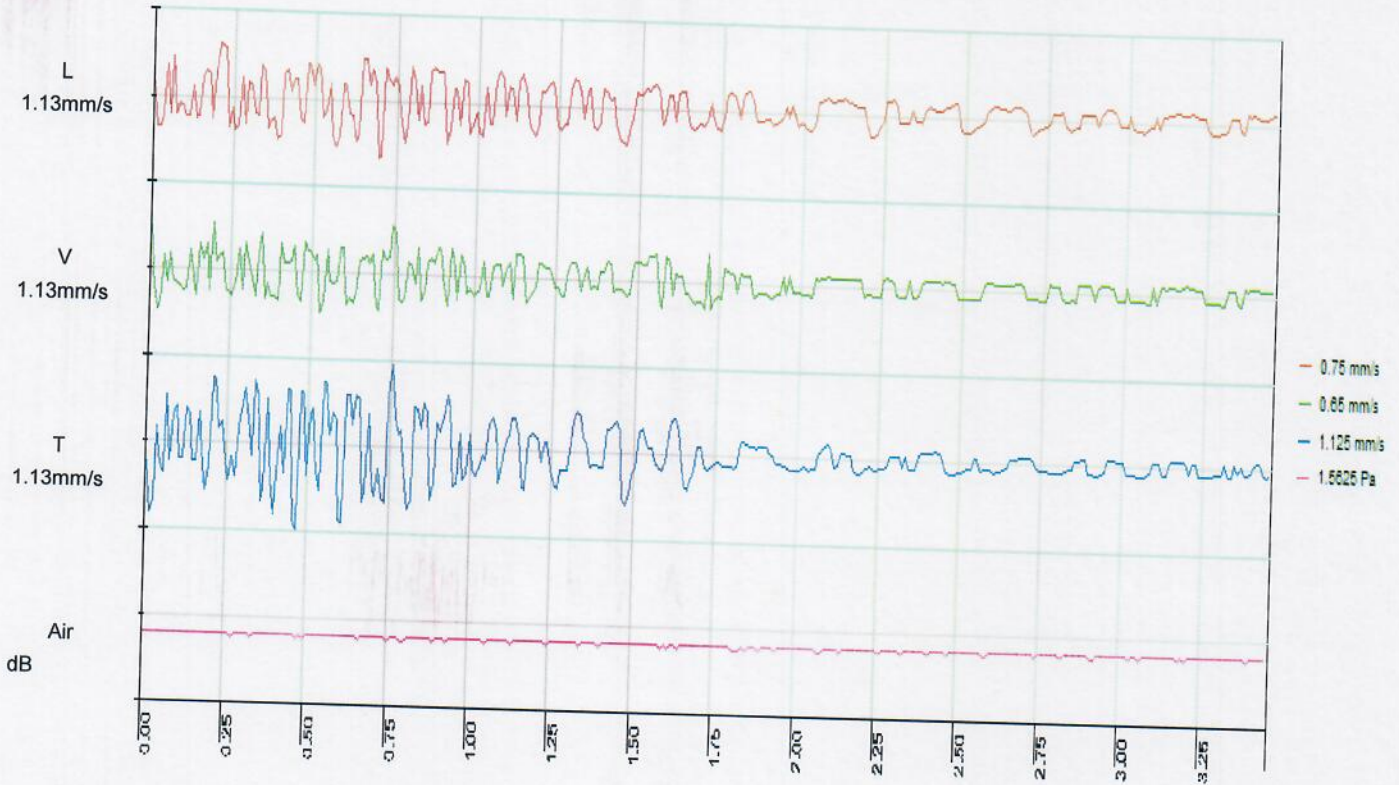
EventNo	721	Plane	
Variable	L	V	T
Bank A			
Max Vel (mm/s)	.675	.875	.350
Frequency (Hz)	16.7	10.9	31.3
Max Acc (g)	.028	.025	.020
Max Disp (mm)	.007	.010	.005
Resultant Max A	.925mm/s		
Air Overpressure	108dB		
Date	11/08/20		
Time	13:12:44		
Voltage	5.35		

Event 576 11/08/20 13:10:47 Calibrate by: MAY 21 Central Site Station B554



EventNo	576	Plane	
Variable	L	V	T
Bank A			
Max Vel (mm/s)	.850	.475	1.00
Frequency (Hz)	35.7		35.7
Max Acc (g)	.035	.030	.030
Max Disp (mm)	.010	.009	.008
Resultant Max A	1.15mm/s		
Air Overpressure	106dB		
Date	11/08/20		
Time	13:10:47		
Voltage	4.37		

Event 113 11/08/20 13:10:06 Calibrate by: JUN 21 Southern Site Station B554



EventNo 113			
Variable	L	Plane	
Bank A		V	T
Max Vel (mm/s)	.750	.650	1.13
Frequency (Hz)	25.0	35.7	19.2
Max Acc (g)	.025	.023	.028
Max Disp (mm)	.014	.009	.020
Resultant Max A	1.18mm/s		
Air Overpressure	100dB		
Date	11/08/20		
Time	13:10:06		
Voltage	5.21		



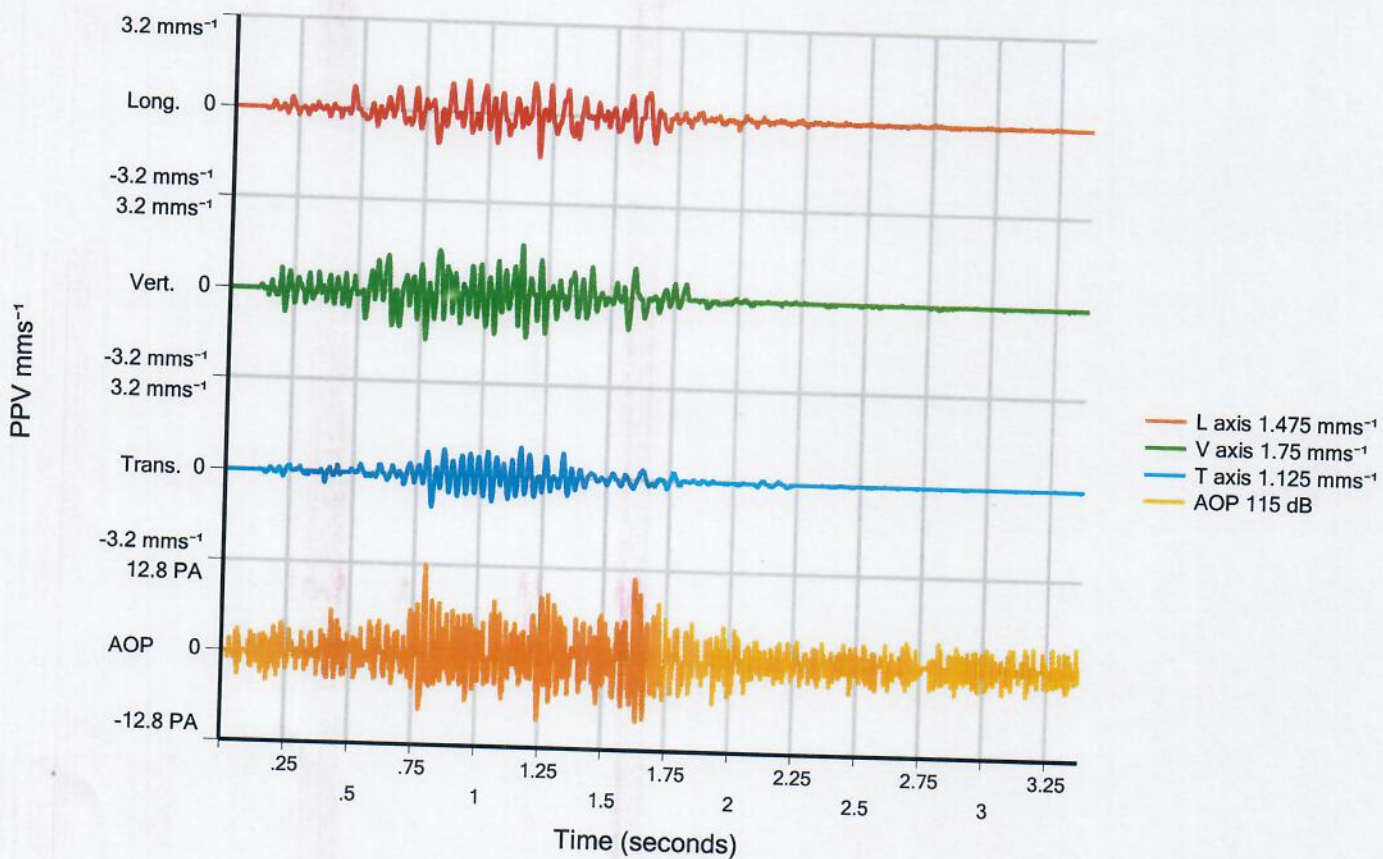
V9000 Seismograph

Serial Number 2333

Calibrate by: 5/2021

Trigger Waveform Graph

Location Site OFFICE



Event Number	733
Serial Number	2333
Event Type	Trigger A
Monitoring Mode	PPV mms ⁻¹
Start Date	11/8 /2020
Start Time	13:21:04

Channel A	PPV	Frequency	Acceleration	Displacement
Longitudinal Max	1.475 mms ⁻¹	27.8 Hz	0.038 g	0.019 mm
Vertical Max	1.75 mms ⁻¹	27.8 Hz	0.068 g	0.025 mm
Transverse Max	1.125 mms ⁻¹	25 Hz	0.038 g	0.013 mm